

# Loire Valley

## TOP CYCLE TOURISM DESTINATION



5000 km of cycle routes

# THE LOIRE À VÉLO CYCLING TRAIL



900

kilometres of marked, safe routes from Cuffy to the Atlantic Ocean



22 châteaux and major Loire Valley sites



Luggage transportation service along the whole route



a route for everyone: families, seniors, groups, experienced cyclists

26



bike rental outlets on the route: option to rent a bike at point A and return it to point B

1 million cyclists each year

[www.loireavelo.fr](http://www.loireavelo.fr)

a dedicated website to prepare your route, calculate your distances and download GPS tracks



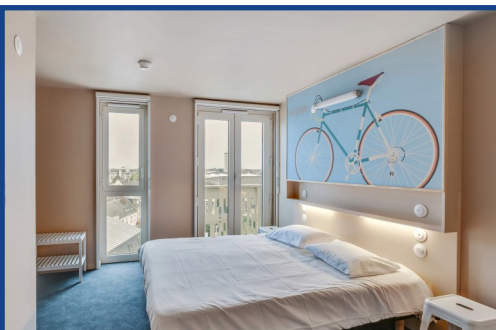
Specially equipped trains can transport cycle tourists from June to September. 50 to 83 spaces for bicycles on the Orléans-Tours-Nantes-Le Croisic line. Free service, no reservation required.



650 professionals involved in the "Accueil Vélo" initiative: accommodation providers, tourist sites, tourist offices or bicycle rental and repair outlets located less than 5 km from the route offer services tailored to cycle tourists' needs (secure bike room, repair kit, bicycle cleaning equipment, etc.)



Option to rent electrically assisted bicycles (EABs) and to recharge them all along the route. Quick charging stations are available at Châteauneuf-sur-Loire (Place du Port), the National Domain of Chambord, in Tours and at Villandry Tourist Office



New in Tours, "The People Hostel" provides a full range for a young touring clientele and small sports groups or associations: 47 rooms (dormitories or double rooms), 138 beds, a restaurant and bar also open on the premises to encourage people to meet together.

[www.thepeoplehostel.com](http://www.thepeoplehostel.com)



## Which guides to plan your route?

3 guides in French: Routard Guide editions, Editions Ouest France, Chamina Editions

1 guide in English: Editions Ouest France - Wonderful Brittany 1 guide in German: Bikeline

The "Abricyclo" are simple accommodation facilities tailored to cycle touring, such as bivouac tents on stilts. They are available per night and consist of a shelter with a picnic table on the ground floor and a high sleeping area for 2 people.

# WEEKEND IDEAS ON THE LOIRE À VÉLO CYCLING TRAIL



## THE WILD LOIRE : FROM CUFFY TO SANCERRE

**Departure:** La Guerche-sur-l'Aubois train station, accessible by train from Paris via Nevers (3 hrs)

### Day 1: La Guerche-sur-l'Aubois > Beffes (36 km)

Landscapes vary between countryside, river and canal.

**Not to be missed:** the village of Apremont-sur-Allier, one of the most beautiful villages in France, the confluence of the Allier and Loire rivers at the Bec d'Allier, mileage zero in Cuffy and the river port of Marseilles-lès-Aubigny.

**Accommodation suggestion:** Beffes bike-friendly campsite.

### Day 2: Beffes > Sancerre (37 km)

A concentration of nature and heritage with greenways for a large part.

**Not to be missed:** the vineyards of the Sancerre hills.

Return to Paris from Cosne-sur-Loire train station, 13 km from Sancerre.

## AMONGST NATURE AND CULTURE : FROM BLOIS TO ORLÉANS

**Departure:** Blois train station, accessible by train from Paris (1 hr 30 mins)

### Day 1: Blois > Muides-sur-Loire via Chambord (31 km): Countryside, forest and vineyards



**Not to be missed:** the Château of Chambord, Chambord biscuit factory, the traditional port of Saint-Dyé-sur-Loire.

**Accommodation suggestion:** Muides-sur-Loire campsite.



### Day 2: Muides-sur-Loire > Orléans (44 km)

Loire and agricultural plains

**Not to be missed:** the village of Beaugency and its medieval keep, "La Corne des Pâtures" riverside café ("guinguette"), the Château of Meung-sur-Loire, Courpain Point, the confluence of the Loire and Loiret rivers, the city of Orléans.

Return by train from Orléans train station (1 hr 10 mins from Paris).

## WINES AND CHÂTEAUX : FROM CHINON TO LANGEAIS VIA AZAY-LE-RIDEAU

**Departure:** Chinon train station, accessible by train from Paris via Tours (3 hrs)

### Day 1: Chinon > Azay-le-Rideau (34 km)

Two vineyards stretch over the limestone hills on the banks of the Vienne, Loire and Indre rivers: Chinon PDO and the Touraine Azay-le-Rideau PDO.

**Not to be missed:** the Royal Fortress of Chinon, the Château of Azay-le-Rideau and its little cousin, the Château of l'Islette.

**Accommodation suggestion:** Hôtel de Bien-court.

### Day 2: Azay-le-Rideau > Langeais (25 km)

Green countryside and confluence of the Cher and Loire rivers.

**Not to be missed:** the French-style gardens of the Château of Villandry, a tasty break at the "Ecolieu La Cabane" - a 100% organic and local riverside café and restaurant, the Château of Langeais.

Return train from Langeais train station (to Paris via Tours, 2 hrs 30 mins)



# CYCLE EXCURSIONS IN THE LOIRE VALLEY

## THE INDRE À VÉLO CYCLING TRAIL

 200 km

Departure: Azay-le-Rideau (connection with the Loire à Vélo cycling trail)

Arrival: Jeu-les-Bois, south of Châteauroux

Route: rolling countryside overlooking the Indre Valley, wide country plains, pretty woods and glorious nature.

Sites crossed: the Château of Azay-le-Rideau, Medieval Fortress of Montbazou, Royal City of Loches and the Château of Palluau-sur-Indre.

[www.en.francevelotourisme.com/cycle-](http://www.en.francevelotourisme.com/cycle-)



## THE VALLÉE DU LOIR À VÉLO CYCLING TRAIL

 115 km in the region (320 km in total)

Departure: Saint-Eman, at the source of the Loir


Arrival: Nogent-sur-Loir, in the region (Angers, final city of the route and connection with the Loire à Vélo cycling trail)

Route: picturesque villages with vines, orchards and troglodytic houses carved into the tuffeau stone. No greatly difficult parts, stunning sections along the water.

**Sites crossed:** the village of Bonneval canals, the Château of Châteaudun, Vendôme, the troglodytic village of Trooo, the Château of Lavardin, the village of Montoire-sur-le-Loir.[www.en.francevelotourisme.com/cycle-route/the-vallee-du-loir-by-bike](http://www.en.francevelotourisme.com/cycle-route/the-vallee-du-loir-by-bike)



## SAINT-JACQUES À VÉLO (ST JAMES' WAY CYCLING TRAIL)

 315 km in the region

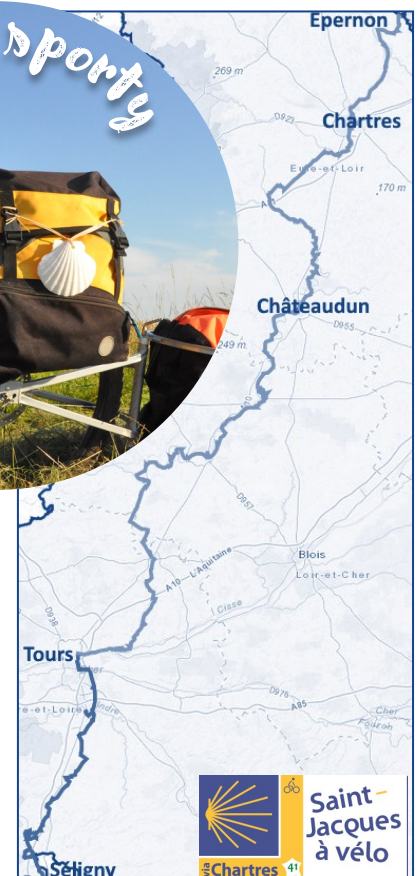
Departure: Epernon, in the region (Rambouillet, starting point of the entire route)

Arrival: Séligny, in the region (option to continue the route to Santiago de Compostela)

Route: a historical, cultural and sporting epic on cycle paths closely resembling the 100-year-old paths used by pilgrims to Santiago de Compostela. The route shares the Vallée du Loir à Vélo and Véloscenic cycling trails.

Sites crossed: the Château of Maintenon, Chartres and its cathedral classified as a UNESCO World Heritage Site, the Château of Châteaudun, the village of Bonneval and troglodytic village of Troo, Tours and the Saint-Martin Basilica, the Vienne river banks.

[www.en.francevelotourisme.com/cycle-route/saint-jacques-by-bike](http://www.en.francevelotourisme.com/cycle-route/saint-jacques-by-bike)



## THE VELOSCENIC

🚲 123 km in the region (450km in total)

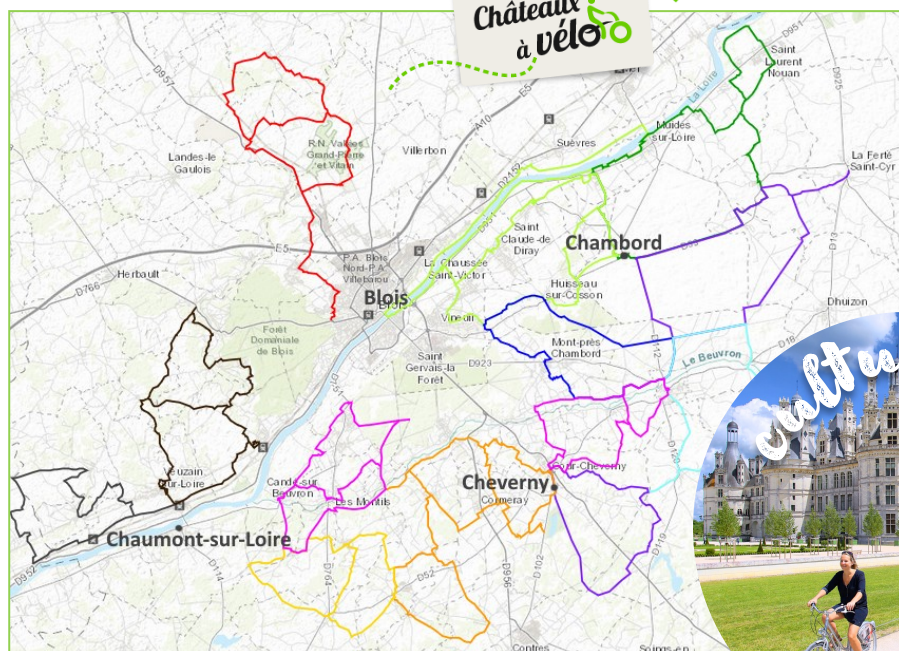
**Departure:** Epernon in the region (Paris, starting point of the entire route)

**Arrival:** Nogent-le-Rotrou in the region (Mont-Saint-Michel, arrival point of the total route)

**Route:** very beautiful plains along the Eure Valley, authentic villages and rolling countryside in the Perche Regional Nature Park.

**Sites crossed:** the Château of Maintenon, Chartres and its cathedral classified as a UNESCO World Heritage Site, the Abbey of Thiron-Gardais, the Château des Comtes du Perche in Nogent-le-Rotrou, the Perche Regional Nature Park.

[www.veloscenic.com](http://www.veloscenic.com)



## THE CHÂTEAUX À VÉLO CYCLING TRAIL

🚲 459km divided into 21 loops

Around Blois: 5 paths from 25 km to 77 km

Around Chambord: 9 paths from 14 km to 33 km

Around Cheverny: 5 paths from 6 km to 25 km

Around Chaumont-sur-Loire: 3 paths from 26 km to 43 km

Day, half-day or multi-day excursions, suitable for everyone.

**Châteaux to discover:** Royal Château of Blois, Château of Cheverny, Château of Chambord, Regional Domain of Chaumont-sur-Loire.

[www.chateauxavelo.co.uk](http://www.chateauxavelo.co.uk)



## THE BRENNE À VÉLO CYCLING TRAIL

🚲 314 km divided into 12 loops

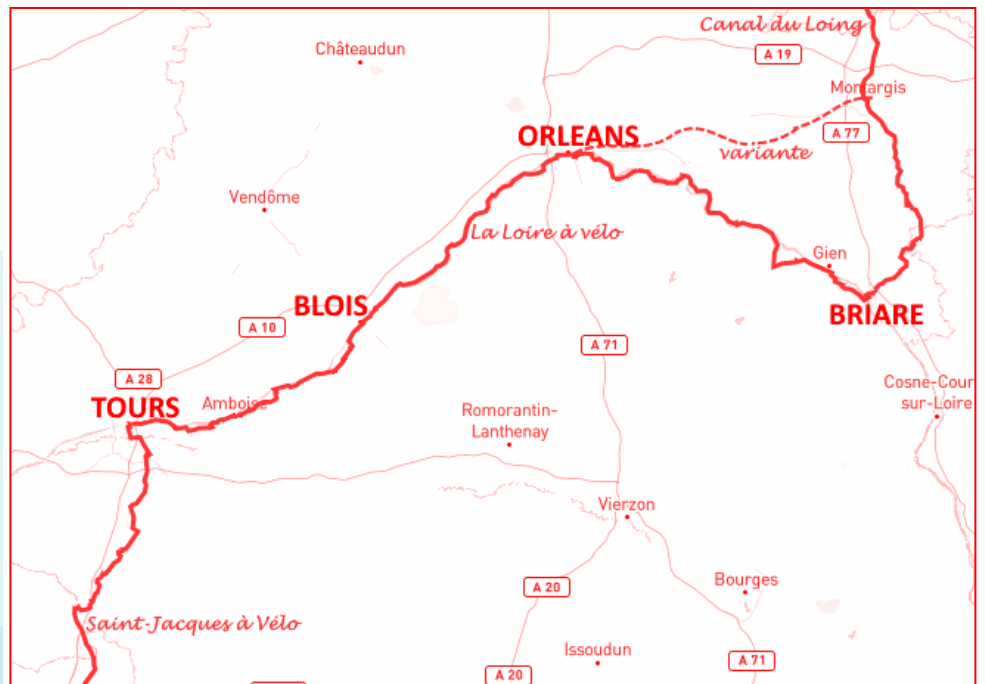
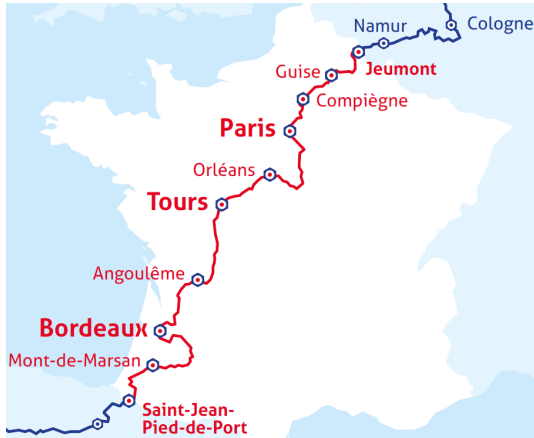
Loops from 11 km to 43 km, to do over half a day or a day, suitable for everyone.

Brenne Regional Nature Park is nicknamed "the land of a thousand lakes". It is home to an exceptional flora and fauna with more than 2,300 protected animal species.

[www.parc-naturel-brenne.fr](http://www.parc-naturel-brenne.fr)



# NEW CYCLING TRAILS 2020



## LA SCANDIBERIQUE

🚲 365km

📍 Departure: Dordives, north of Montargis

📍 Arrival: Séligny, south of Tours

Route: The Scandibérique trail brings together 3 cycling routes in the region: the Loing canal to Briare, the Loire à Vélo cycling trail to Tours and the Saint-Jacques à Vélo cycling trail. A variant is under construction to link Montargis to Orléans directly, and shorten the route by 160 km.

Sites crossed: Montargis, known as the “Venice of the Gâtinais”, the Briare canal bridge, Orléans, the Loire Châteaux, Tours, the Vienne river banks.

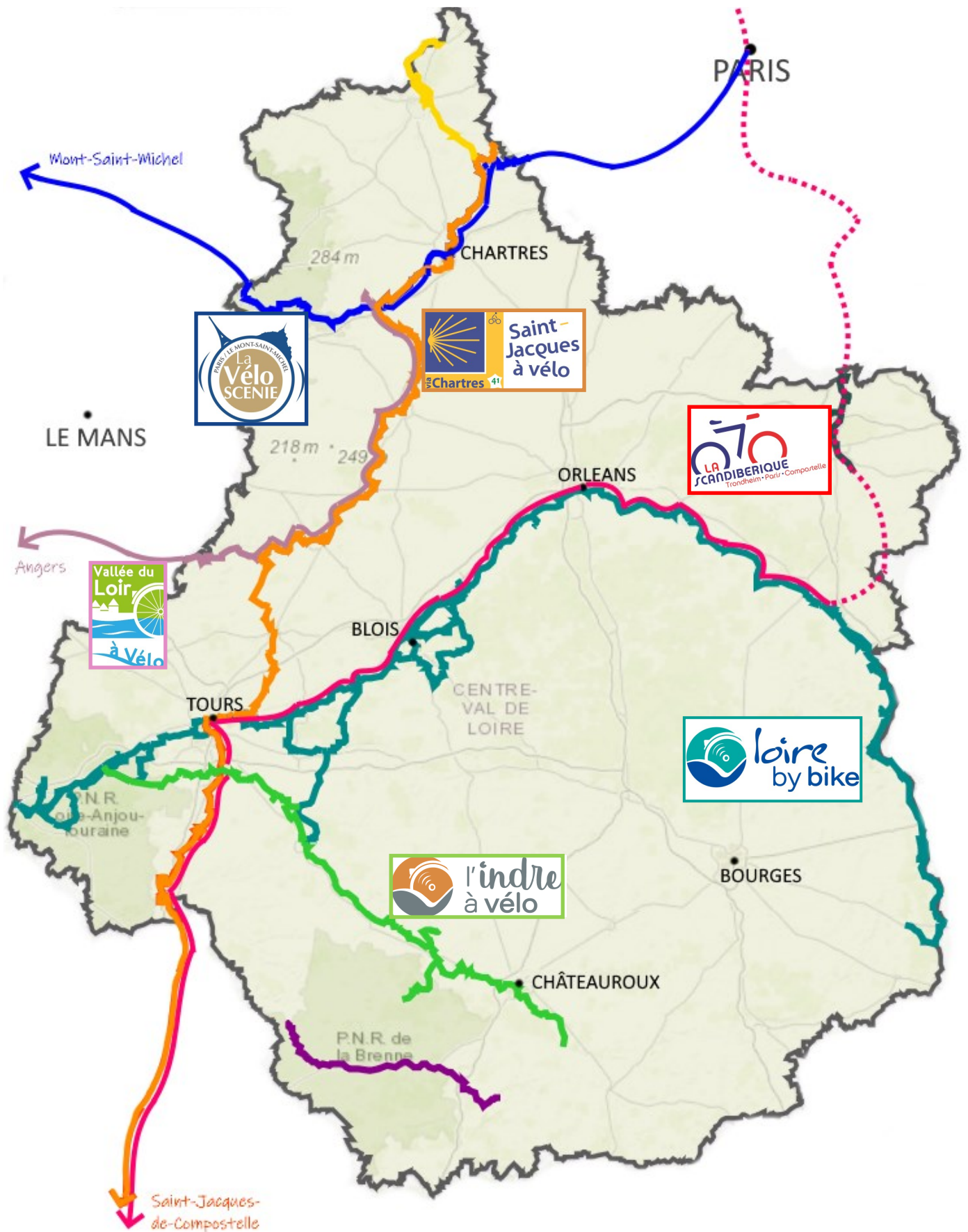
The +: With more than 1700 km, the Scandibérique trail is the longest cycling route in France. It is also part of the EuroVélo 3 cycling trail, which links Trondheim to Santiago de Compostela.

Finalisation of the route: during 2020

[www.scandiberique.fr](http://www.scandiberique.fr)



# MAP OF THE CYCLING TRAILS





## **Comité régional du tourisme Centre-Val de Loire**

Isabelle Scipion

Vanessa Treney

Estelle Vandenbroucq

[presse@centre-valdeloire.org](mailto:presse@centre-valdeloire.org)

+33 2 38 79 95 08

**[www.valdeloire-france.com](http://www.valdeloire-france.com)**



@LoireValleyPR



@loirevalleytourism